



Duct-Mounted CO2 Transmitter
AM6208D

Features

- Industrial standard analog output: 0~10 VDC, 4~20mA
- Reliable NDIR (Non-Dispersive Infrared) technology for CO2 sensing
- Matrix calibration technology to ensure better performance under wider temperature and measurement range
- High accuracy, in conformity with RESET Standard Grade A (Note 1) & ASHRAE 62.1-2022 (Note 2)
- PM, VOC, RH&T available
- Long lifespan, 15+ years lifetime
- Protection grade IP65

Specifications

Operating Principle	NDIR
Measurement Range	0~5000ppm
CO2 Accuracy	±75ppm @ 400~2500ppm available
Resolution	1ppm
Data Interval	1s
Power Supply	24VAC/DC±10%
Analog Output	0~10V, 4~20mA (5000 max)
Working Conditions	-10°C~50°C, 0~95%RH (non-condensing)
Storage Condition	-20°C~70°C, 0~95%RH (non-condensing)
Response Time (T90)	≤30s
Average Current	≤60mA
Standby Current	≤20mA
Dimension	W86*L120*D185 (mm)
Installation	Duct-Mounted
Protection Grade	IP65



Home



School



Office



Railway Station



Applications



Building HVAC System



Hospital



Supermarket



Library

Cubic Sensor and Instrument Co.,Ltd.

Add: Fenghuang No.3 Road, Fenghuang Industrial Park, Eastlake
Hi-tech Development Zone, Wuhan, 430205, China

Tel: +86-27-81628827
E-mail: sales@gassensor.com.cn
Web: en.gassensor.com.cn

All products are in continuous development and therefore specifications may be subject to change without prior notice.



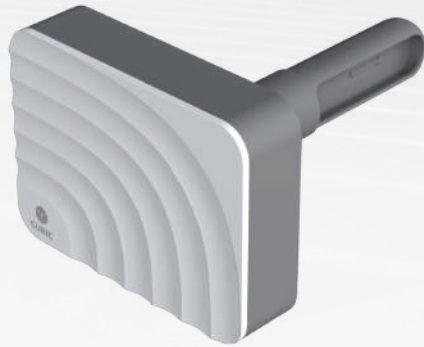
Air Quality Monitor & Transmitter



HVAC Transmitter
AM6108 Series



Air Quality Monitor
AM7000 Series



Duct Mounted Transmitter
AM6208D

Modbus BACnet EnOcean



BACnet/ModBus/Wi-Fi/EnOcean HVAC Transmitter
AM6108 Series



Air Quality Monitor
AM7000 Series



Wall-Mounted CO2 Transmitter
AM6208W

Features

- BACnet/Modbus protocol for choice
- IoT wireless monitoring is available
- Real-time monitoring for CO2, PM1.0, PM2.5, PM10, RH&T (TVOC is optional)
- Compatible with touch-screen operation, device ID, MAC ID and baud rate can be set via surface
- OEM/ODM is available (sensor configuration, appearance design, PCBA design, software development etc.)

Specifications

Measurement Range	CO2: 0~5000ppm; PM2.5: 0~999µg/m³ Temperature: -10°C~50°C; Relative Humidity: 0~95%RH
PM Accuracy	PM2.5: 0~100µg/m³, ±10µg/m³; >100µg/m³, ±10% of reading (25°C±2°C, 50±10%RH)
CO2 Accuracy	± (50ppm+5% of reading) @0~50°C/± (30ppm+3% of reading) is optional
Temperature Accuracy	±1°C (0~50°C)
Humidity Accuracy	±8%RH (0~95%RH)
Working Condition	-10°C~50°C, 0~95%RH (non-condensing)
Wireless Connectivity	Wi-Fi/EnOcean
Power Supply	12VDC or 24VAC/DC
Interface	RS485
Dimension	W86*H86*D25 (mm)
Installation	Wall Mounted (standard American single gang switch plate is available)

Features

- MQTT integration function with various cloud servers is available, such as Microsoft Azure, AWS, Google Cloud, etc
- Smart device with phone APP and website service to get air quality measurement data
- Real-time monitoring for CO2+PM2.5+RH&T (HCHO/TVOC is optional)
- Traffic light indicates different CO2 concentration
- Desktop monitor, USB power supply
- OEM/ODM is available (sensor configuration, appearance design, battery supply, PCBA design, software development etc.)

Specifications

Measurement Range	CO2:0~5000ppm; PM2.5: 0~999µg/m³ Temperature: -10°C~50°C; Relative Humidity: 0~95%RH
PM Accuracy	PM2.5: 0~100µg/m³, ±10µg/m³; >100µg/m³, ±10% of reading (25°C±2°C, 50±10%RH)
CO2 Accuracy	± (50ppm+5% of reading) @0~50°C/± (30ppm+3% of reading) is optional
Temperature Accuracy	±1°C (0 ~50°C)
Humidity Accuracy	±8%RH (0~95%RH)
Working Condition	-10°C~50°C,0~95%RH (non-condensing)
Wireless Connectivity	Wi-Fi/Bluetooth
Power Supply	DC 5V
Interface	USB
Dimension	W90*H80*D53 (mm)

Features

- Industrial standard analog output: 0~10 VDC, 4~20mA
- Reliable NDIR (Non-Dispersive Infrared) technology for CO2 sensing
- High accuracy, in conformity with RESET Standard Grade A (Note 1) & ASHRAE 62.1-2022 (Note 2)
- PM, VOC, RH&T available
- Long lifespan, 15+ years lifetime

Specifications

Operating Principle	NDIR
Measurement Range	0~5000ppm
CO2 Accuracy	±75ppm @ 400~2500ppm available
Resolution	1ppm
Data Interval	1s
Power Supply	24VAC/DC±10%
Analog Output	0~10V, 4~20mA (500Ω max)
Working Conditions	-10°C~50°C, 0~95%RH (non-condensing)
Storage Condition	-20°C~70°C, 0~95%RH (non-condensing)
Response Time (T90)	≤30s
Average Current	≤60mA
Standby Current	≤20mA
Dimension	W86*H86*D25 (mm)
Installation	Wall-Mounted

Note 1: The accuracy standard quotes "The RESET" Air STANDARD for Accredited Monitors v2.0", copyright © 2018 RESET.
Note 2: ASHRAE standard 62.1_2022 which published on 31st Oct. 2023 states that "CO2 sensors shall be certified by the manufacturer to be accurate within ±75 ppm at concentrations of 600, 1000 ppm, and 2500 ppm when measured at sea level at 77 °F (25 °C)"